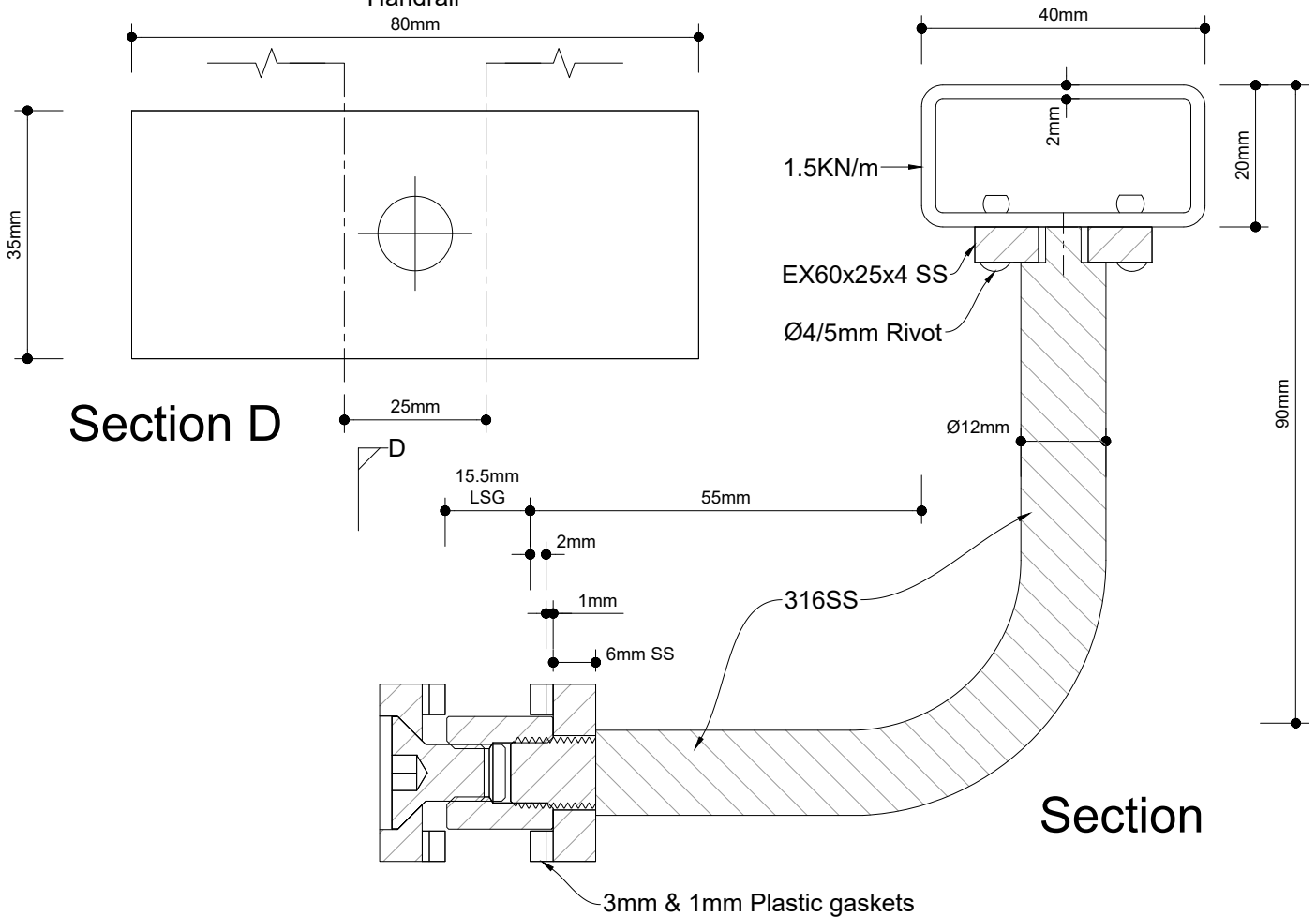


**PLAN 38385PM - 2**

1.5kN/m Imposed Action  
15.5mm Laminated Safety Glass Balustrade and 40 x 20 x 2 RHS  
Handrail



© 2013. The copyright of this document is the property of Glass Vice Limited and shall not be reproduced, copied, loaned or disposed of directly, or indirectly, nor used for any purpose other than that for which it is specifically furnished without prior consent.

All dimensions in millimetres



**Glass Vice® Clearline® - Handrail**  
C1 C2 1.5kN Balustrade System  
15.5 SGP Laminated Safety Glass

Date: May, 2017  
Scale: Scale ###

www.glassvice.com  
Phone +64 9 414 6565  
info@glassvice.com

Quick Code:

**CL-12-HR**