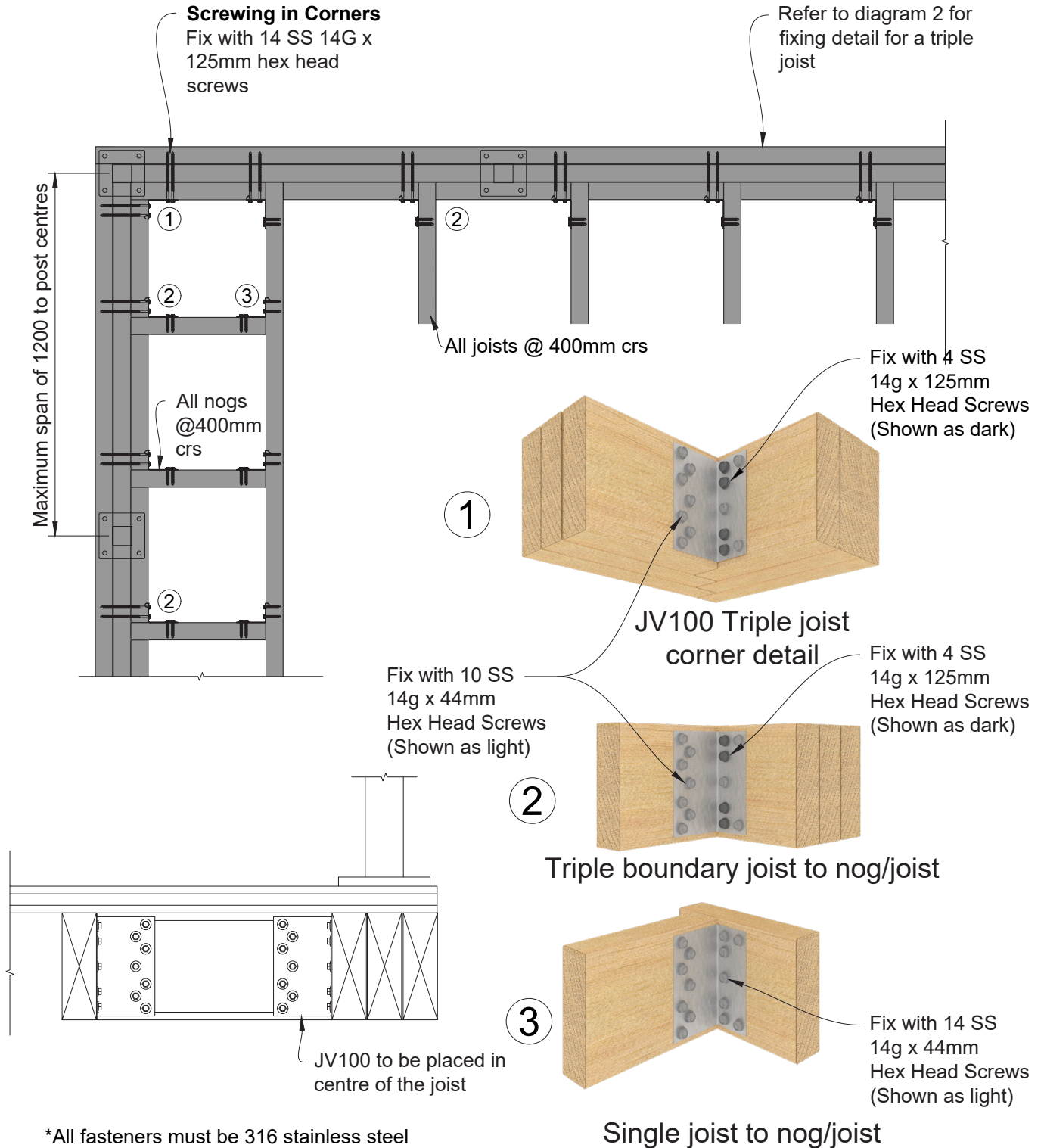


J-VICE®

Typical Triple Boundary Joist Timber Deck Construction Details
 Alternative solution to NZS 3604:2011 7.4.1.3
 detailed to resist twisting of the boundary joist and joist hanger.

Deck designer to ensure the structure can support the appropriate horizontal and vertical loads.

This page applies to Glass Vice System - Top fix Barrier systems



Triple