

08 Nov 2019 14:52

© 2019. The copyright of this document is the property of Glass Vice Limited and shall not be reproduced, copied, loaned or disposed of directly, or indirectly, nor used for any purpose other than that for which it is specifically furnished without prior consent.

gv_vertbatt_Corey.rvt
All dimensions in millimetres



Vertical Battens

1300mm High Face Fixed into Timber

Section - Face Fix Triple Joist Door 1.3M Residential Barrier

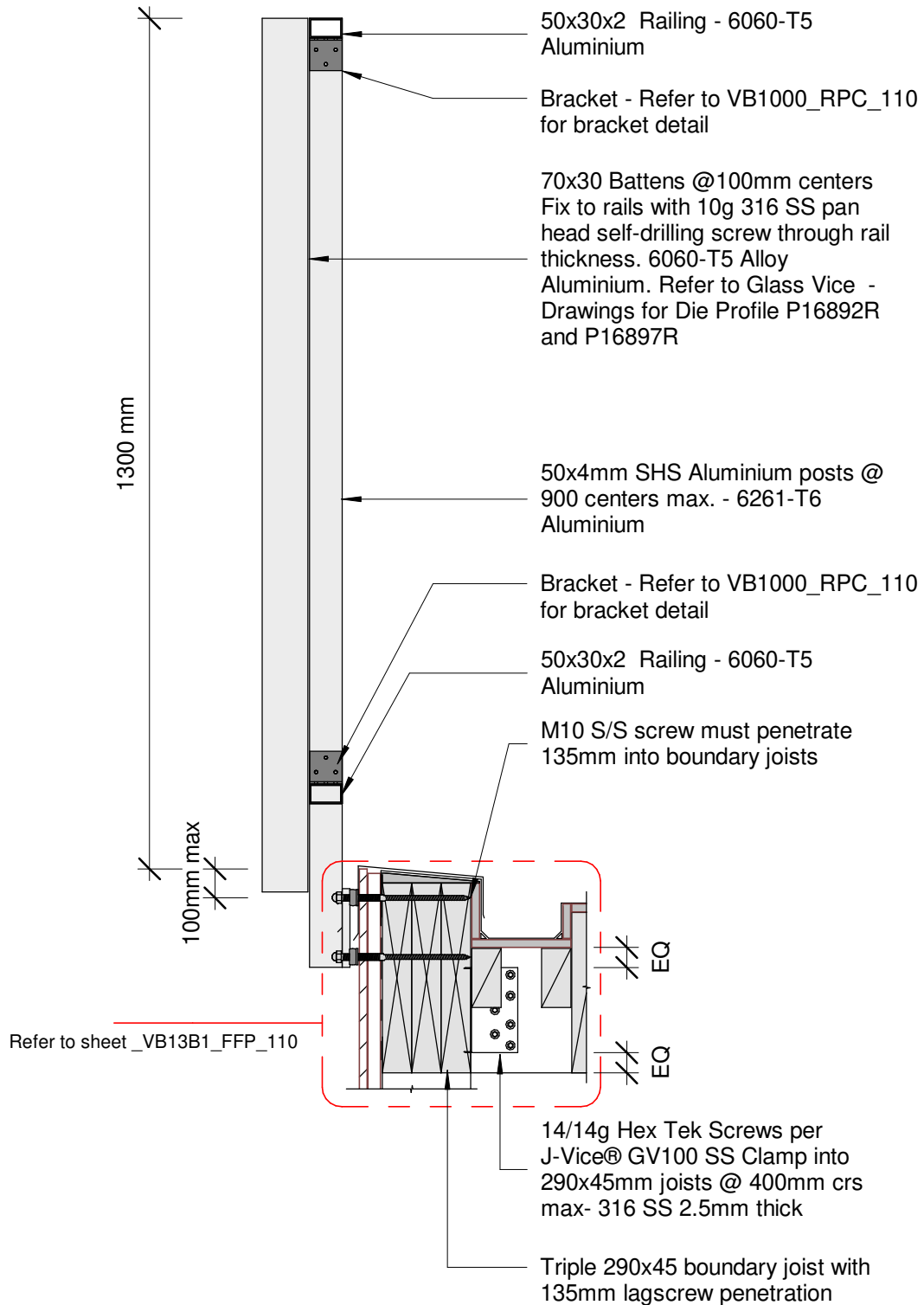
Date: October 2019

Scale: 1 : 10

Issue 01

www.glassvice.com
Phone +64 9 414 6565
info@glassvice.com

_VB13B1_160



08 Nov 2019 14:52

© 2019. The copyright of this document is the property of Glass Vice Limited and shall not be reproduced, copied, loaned or disposed of directly, or indirectly, nor used for any purpose other than that for which it is specifically furnished without prior consent.

gv_vertbatt_Corey.rvt
All dimensions in millimetres



Vertical Battens

1300mm High Face Fixed into Timber

Section - Face Fix 190 Standoff Vertical Batten 1.3M Residential Barrier

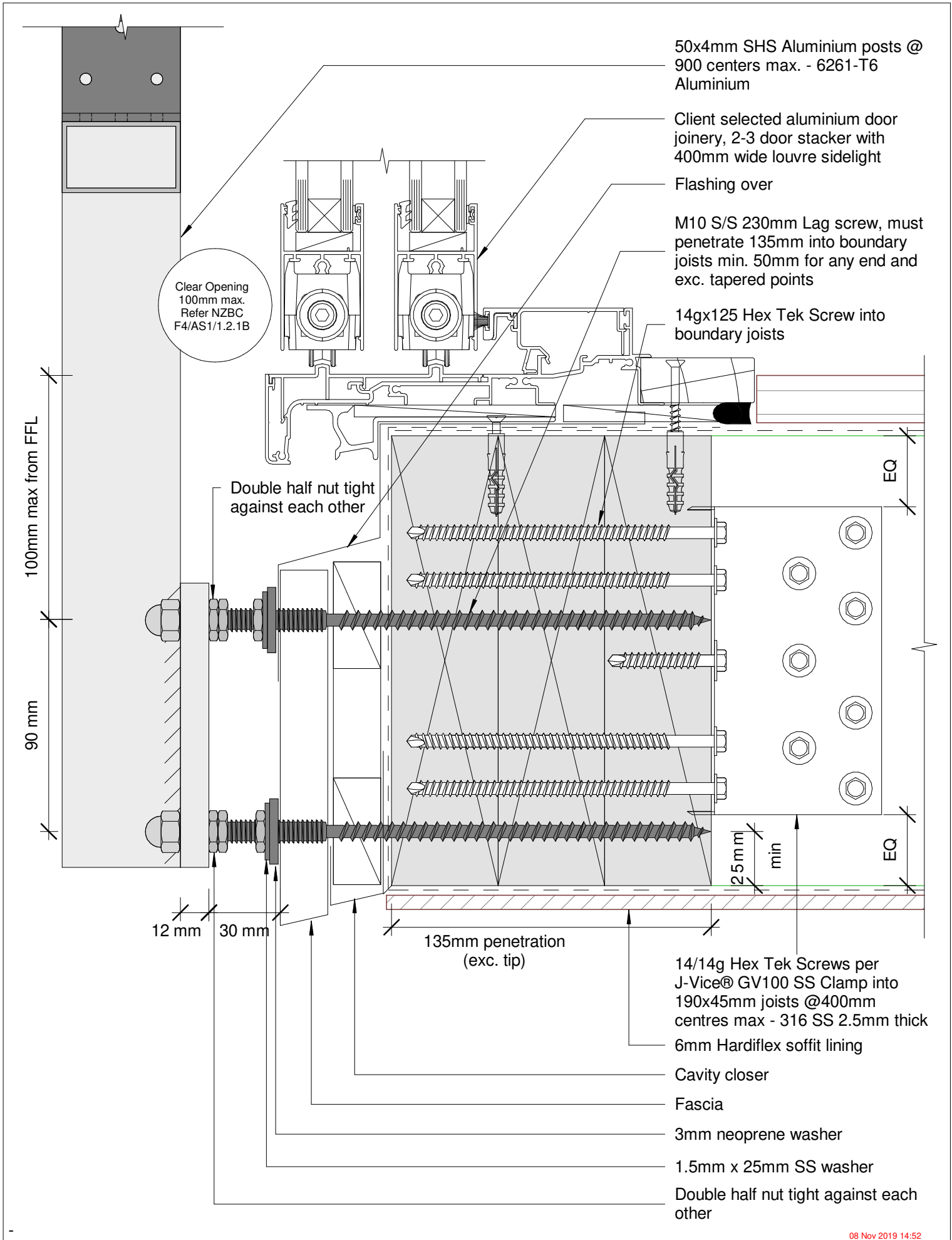
Date: October 2019

Scale: 1 : 10

Issue 01

www.glassvice.com
Phone +64 9 414 6565
info@glassvice.com

_VB13B1_170



08 Nov 2019 14:52

© 2019. The copyright of this document is the property of Glass Vice Limited and shall not be reproduced, copied, loaned or disposed of directly, or indirectly, nor used for any purpose other than that for which it is specifically furnished without prior consent.

gv_vertbatt_Corey.rvt
All dimensions in millimetres



Vertical Battens

1300mm High Face Fixed into Timber

Detail - Face Fix 190 Triple Joist with Door 1.3M Residential Barrier

Date: October 2019

Scale: 1 : 2

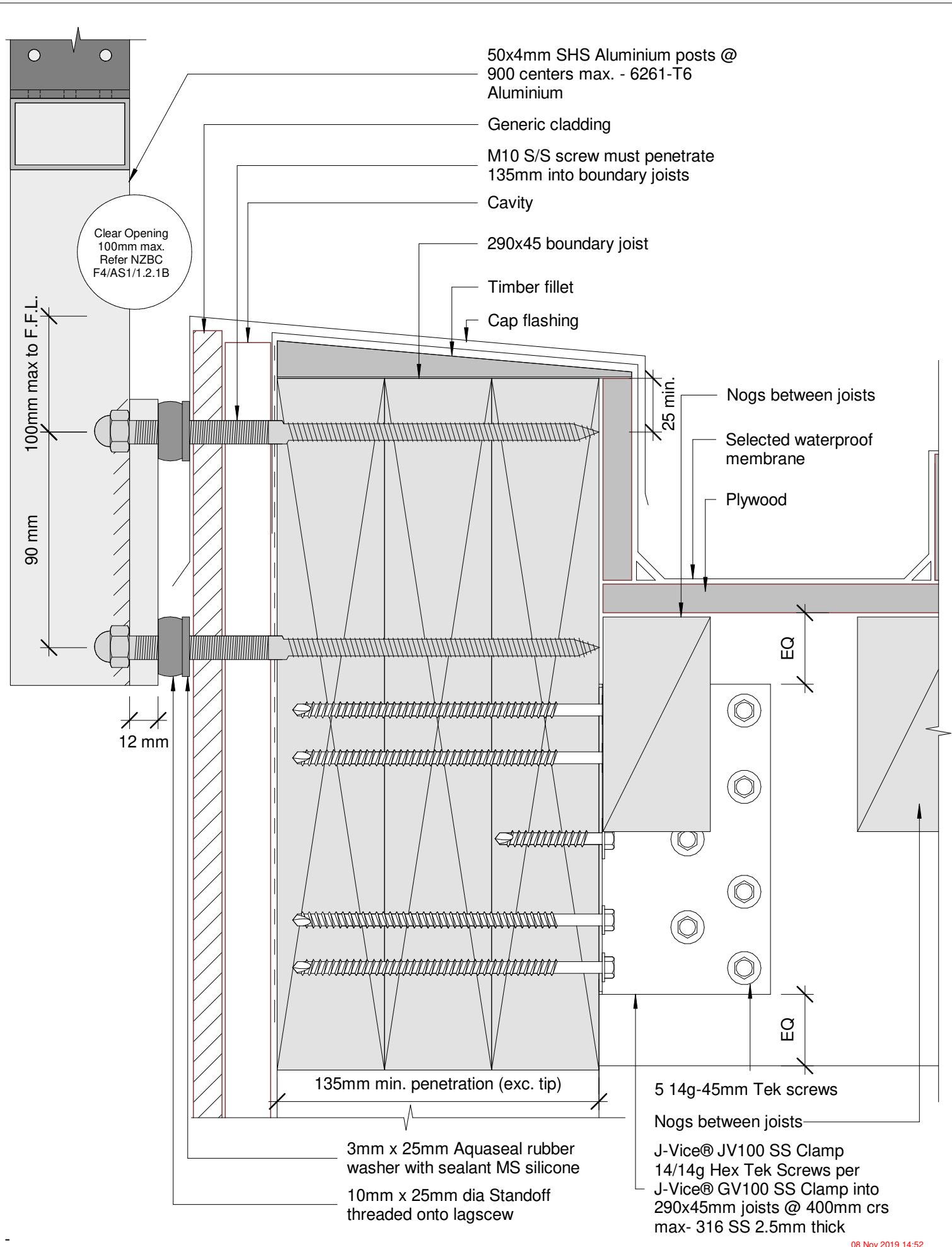
Issue 01

www.glassvice.com

Phone +64 9 414 6565

info@glassvice.com

_VB13B1_FFD_110



50x4mm SHS Aluminium posts @
900 centers max. - 6261-T6
Aluminium

Generic cladding

M10 S/S screw must penetrate
135mm into boundary joists

Cavity

290x45 boundary joist

Timber fillet

Cap flashing

Clear Opening
100mm max.
Refer NZBC
F4/AS1/1.2.1B

100mm max to F.F.L.
90 mm

Nogs between joists

Selected waterproof
membrane

Plywood

25 min.

12 mm

EQ

EQ

135mm min. penetration (exc. tip)

5 14g-45mm Tek screws

Nogs between joists

J-Vice® JV100 SS Clamp

14/14g Hex Tek Screws per

J-Vice® GV100 SS Clamp into

290x45mm joists @ 400mm crs

max- 316 SS 2.5mm thick

3mm x 25mm Aquaseal rubber
washer with sealant MS silicone

10mm x 25mm dia Standoff
threaded onto lagscrew

08 Nov 2019 14:52

© 2019. The copyright of this document is the property of Glass Vice Limited and shall not be reproduced, copied, loaned or disposed of directly, or indirectly, nor used for any purpose other than that for which it is specifically furnished without prior consent.

gv_vertbatt_Corey.rvt
All dimensions in millimetres



Vertical Battens

1300mm High Face Fixed into Timber

Detail - Face Fix Triple Joist 190 Standoff 1.3M Residential Barrier

Date: October 2019
Scale: 1 : 2

www.glassvice.com
Phone +64 9 414 6565
info@glassvice.com

Issue 01

_VB13B1_FFP_110