

08 Nov 2019 14:52

© 2019. The copyright of this document is the property of Glass Vice Limited and shall not be reproduced, copied, loaned or disposed of directly, or indirectly, nor used for any purpose other than that for which it is specifically furnished without prior consent.

gv_vertbatt_Corey.rvt
 All dimensions in millimetres



Vertical Battens

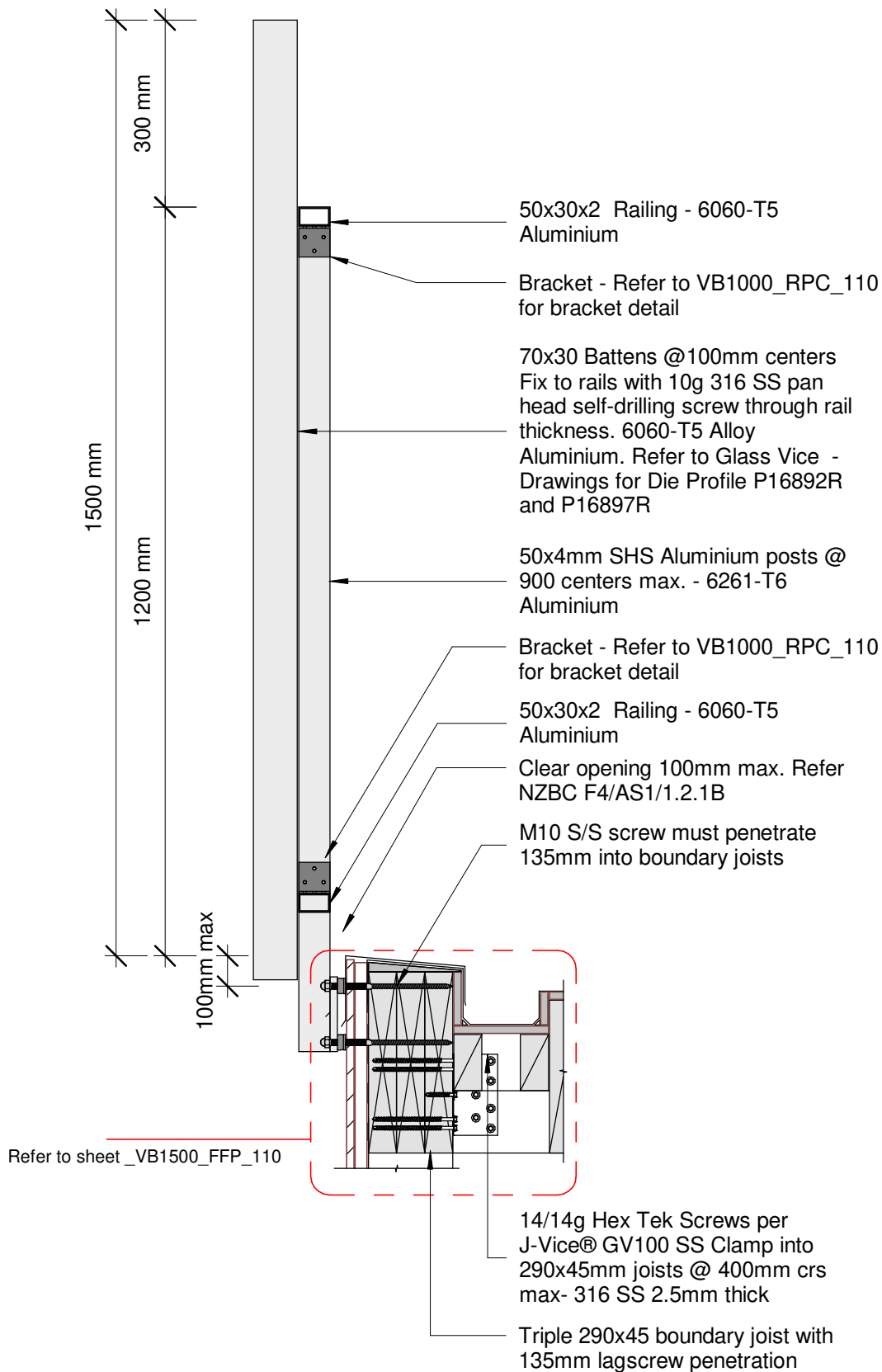
1500mm High Face Fixed into Timber

Section - Face Fix Triple Joist Door 1.5M Residential Barrier

Date: October 2019
 Scale: 1 : 10
 Issue 01

www.glassvice.com
 Phone +64 9 414 6565
 info@glassvice.com

_VB1500_160



08 Nov 2019 14:52

© 2019. The copyright of this document is the property of Glass Vice Limited and shall not be reproduced, copied, loaned or disposed of directly, or indirectly, nor used for any purpose other than that for which it is specifically furnished without prior consent.

gv_vertbatt_Corey.rvt
All dimensions in millimetres



Vertical Battens

1500mm High Face Fixed into Timber

Section - Face Fix 190 Standoff Vertical Batten 1.5M Residential Barrier

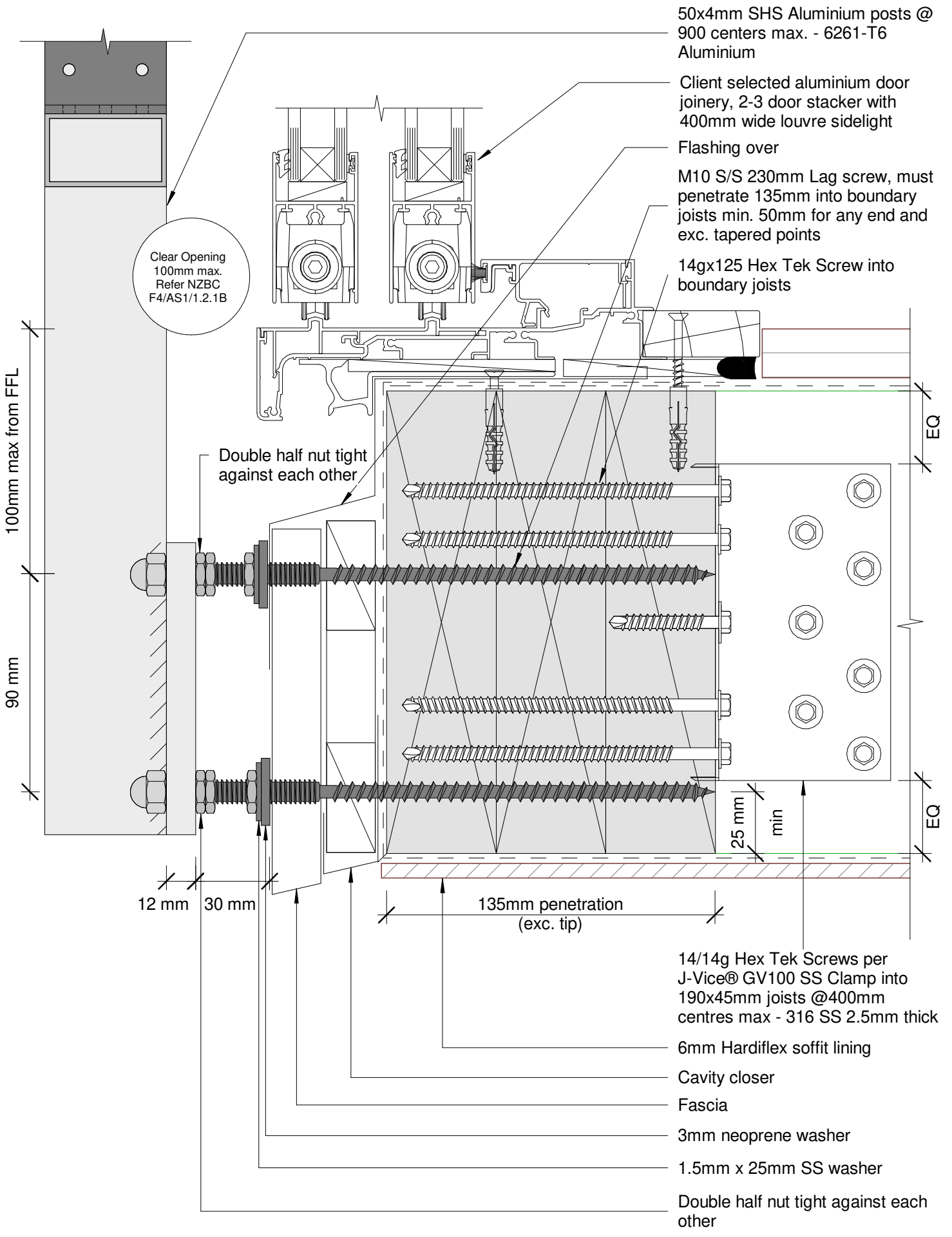
Date: October 2019

Scale: 1 : 10

Issue 01

www.glassvice.com
Phone +64 9 414 6565
info@glassvice.com

_VB1500_170



50x4mm SHS Aluminium posts @ 900 centers max. - 6261-T6 Aluminium

Client selected aluminium door joinery, 2-3 door stacker with 400mm wide louvre sidelight

Flashing over

M10 S/S 230mm Lag screw, must penetrate 135mm into boundary joists min. 50mm for any end and exc. tapered points

14gx125 Hex Tek Screw into boundary joists

Clear Opening
100mm max.
Refer NZBC
F4/AS1/1.2.1B

100mm max from FFL

90 mm

Double half nut tight against each other

12 mm 30 mm

135mm penetration (exc. tip)

25 mm min

14/14g Hex Tek Screws per J-Vice® GV100 SS Clamp into 190x45mm joists @400mm centres max - 316 SS 2.5mm thick

6mm Hardiflex soffit lining

Cavity closer

Fascia

3mm neoprene washer

1.5mm x 25mm SS washer

Double half nut tight against each other

08 Nov 2019 14:52

© 2019. The copyright of this document is the property of Glass Vice Limited and shall not be reproduced, copied, loaned or disposed of directly, or indirectly, nor used for any purpose other than that for which it is specifically furnished without prior consent.

gv_vertbatt_Corey.rvt
All dimensions in millimetres



Vertical Battens

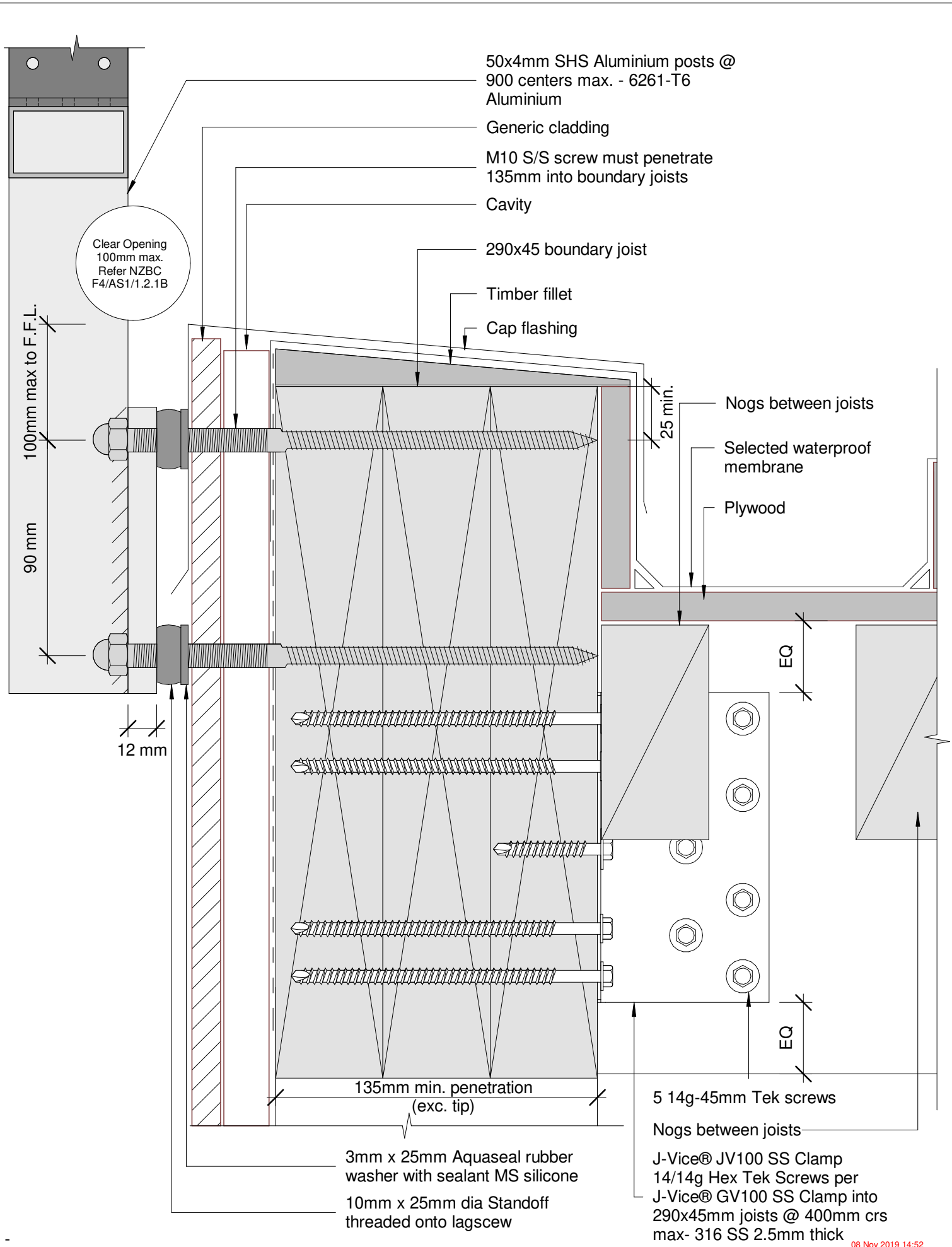
1500mm High Face Fixed into Timber

Detail - Face Fix 190 Triple Joist with Door 1.5M Residential Barrier

Date: October 2019
Scale: 1 : 2
Issue 01

www.glassvice.com
Phone +64 9 414 6565
info@glassvice.com

_VB1500_FFD_110



08 Nov 2019 14:52

© 2019. The copyright of this document is the property of Glass Vice Limited and shall not be reproduced, copied, loaned or disposed of directly, or indirectly, nor used for any purpose other than that for which it is specifically furnished without prior consent.

gv_vertbatt_Corey.rvt
All dimensions in millimetres



Vertical Battens

1500mm High Face Fixed into Timber

Detail - Face Fix Triple Joist 190 Standoff 1.5M Residential Barrier

Date: October 2019
Scale: 1 : 2
Issue 01

www.glassvice.com
Phone +64 9 414 6565
info@glassvice.com

_VB1500_FFP_110